



# EARTHMOVING



GRADE 8 AND 9

# PLOW BOLTS & NUTS

**UNC  
PLOW BOLT**



CBPG9PC

PLN  
GRADE 9

**UNC  
PLOW BOLT**



CBPG8PC

PLN  
GRADE 8

Securing the cutting edges of earthmoving blades.

**UNC  
PLOW BOLT  
RAISED HEAD  
STEPPED**



CBXG9PC

PLN  
GRADE 9

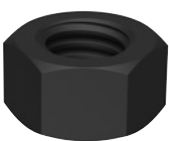
**UNC  
PLOW BOLT  
LONG SHOULDER**



CBLG9PC

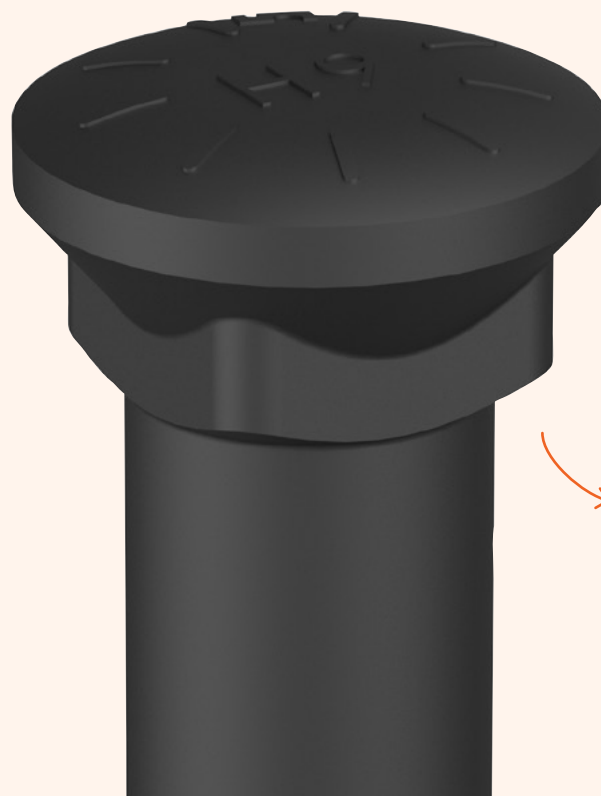
PLN  
GRADE 9

**UNC  
HEX  
PLOW NUT**



CNP8PC

PLN  
GRADE 8



Cold forged square neck and raised head for greater strength.



GRADE 8 AND 9

# TRACK BOLTS & NUTS

Made from high grade alloy steel for increased toughness.

**METRIC FINE  
DOME HEX  
TRACK BOLT**



CBTG9DFM

PLN  
GRADE 9

**UNF  
DOME HEX  
TRACK BOLT**



CBTG9DF

PLN  
GRADE 9

**METRIC FINE  
HEX  
TRACK BOLT**



CBTG9HFM

PLN  
GRADE 9

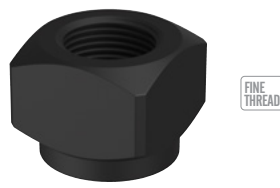
**UNF  
HEX  
TRACK BOLT**



CBTG9HF

PLN  
GRADE 9

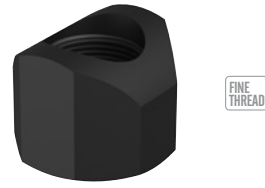
**METRIC FINE  
SQUARE COLLAR  
TRACK NUT**



CNTG8CFM

PLN  
GRADE 8

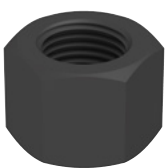
**UNF HEX  
RND FACE  
TRACK NUT**



CNTG8EF

PLN  
GRADE 8

**UNC  
HEX  
TRACK NUT**



CNTG8HF

PLN  
GRADE 8

**UNF SQUARE  
RND FACE  
TRACK NUT**



CNTG8RF

PLN  
GRADE 8

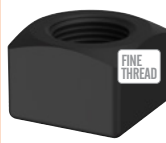
**METRIC FINE  
RND FACE  
TRACK NUT**



CNTG8RFM

PLN  
GRADE 8

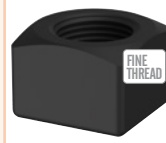
**UNF  
SQUARE  
TRACK NUT**



CNTG8QF

PLN  
GRADE 8

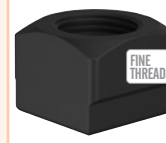
**METRIC FINE  
SQUARE  
TRACK NUT**



CNTG8QFM

PLN  
GRADE 8

**UNF SQUARE  
STEPPED  
TRACK NUT**



CNTG8SF

PLN  
GRADE 8