



# NEPTUNE®

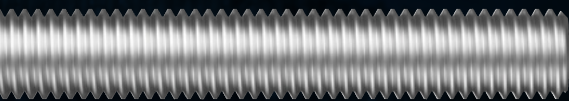




A4 - 80

# NEPTUNE®

## High-Tensile Stainless



### METRIC NEPTUNE® ROD

316



AL16NCM

316  
STAINLESS STEEL  
DIN 975 / A4-80

### METRIC NEPTUNE® HEX BOLT

316



BH16NCM

316  
STAINLESS STEEL  
DIN 931 / A4 - 80

### METRIC NEPTUNE® SET SCREW

316



BS16NCM

316  
STAINLESS STEEL  
DIN 933 / A4-80

### METRIC NEPTUNE® SOCKET SCREW

316



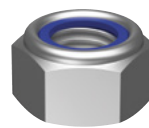
SH16NCM

316  
STAINLESS STEEL  
DIN 912 / A4-80

### METRIC NEPTUNE® HEX NUT

316

NYLOC

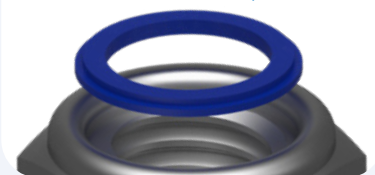


NN16NCM

316  
STAINLESS STEEL  
DIN 985 / A4-80

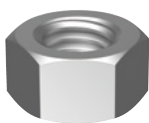
## NYLOC®

The special nylon insert prevents loosening caused by vibration.



### METRIC NEPTUNE® HEX NUT

316

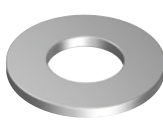


NH16NCM

316  
STAINLESS STEEL  
DIN 934 / A4-80

### METRIC NEPTUNE® FLAT ROUND WASHER

316



WR16NM

316  
STAINLESS STEEL  
HEC 125A / A4-80

### NEW METRIC NEPTUNE® SPRING WASHER

316



WR16NSM

316  
STAINLESS STEEL  
HEC 7980 / A4-80

## Spring Washer

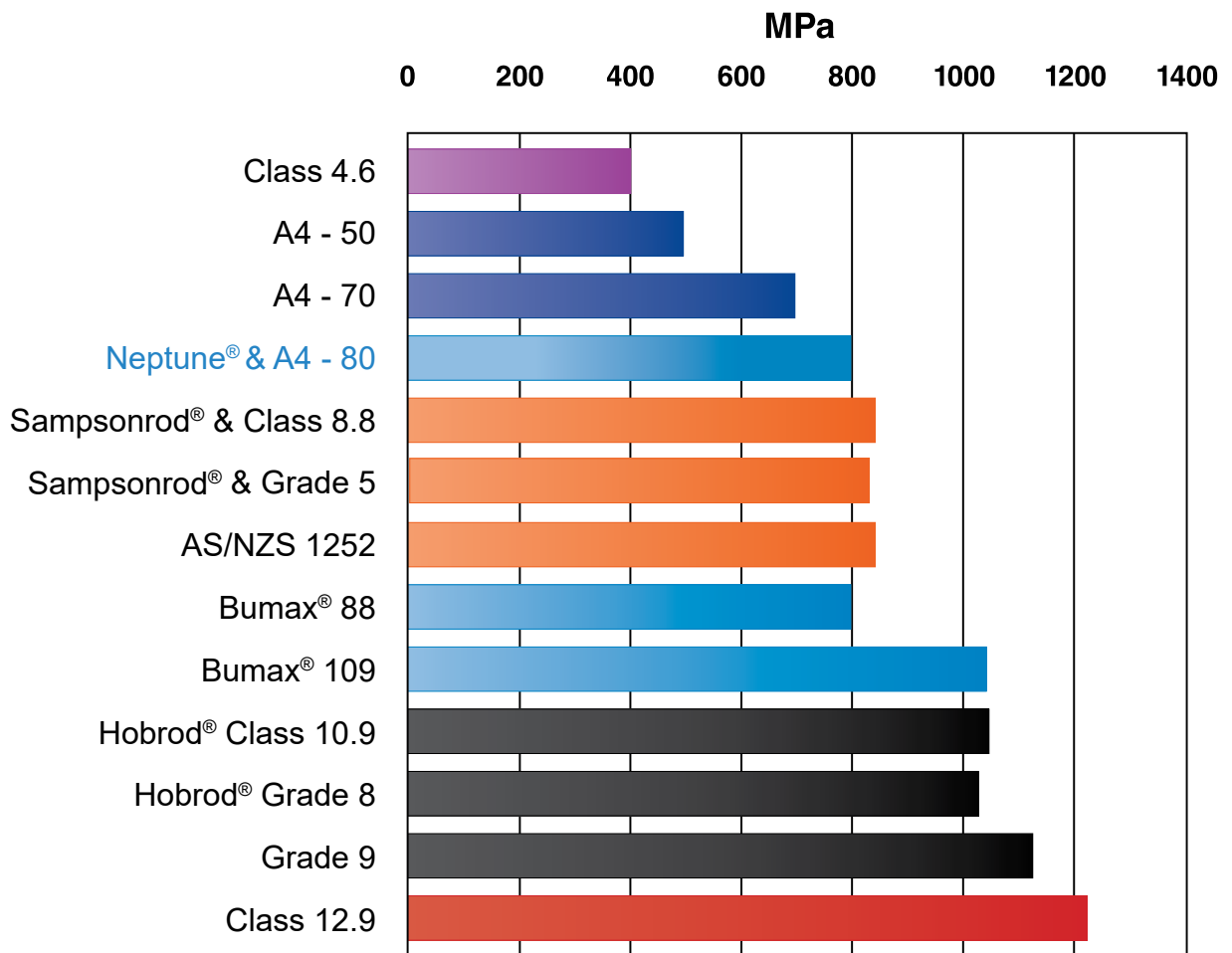
FOR USE WITH NEPTUNE BOLTS AND NUTS

Neptune® spring washers have superior hardness to standard spring washers to accommodate the **higher tensile loads** achieved in a Neptune® assembly.

→ Square section



## Breaking Strength Comparison



# A4-80

## HIGH STRENGTH STAINLESS STEEL